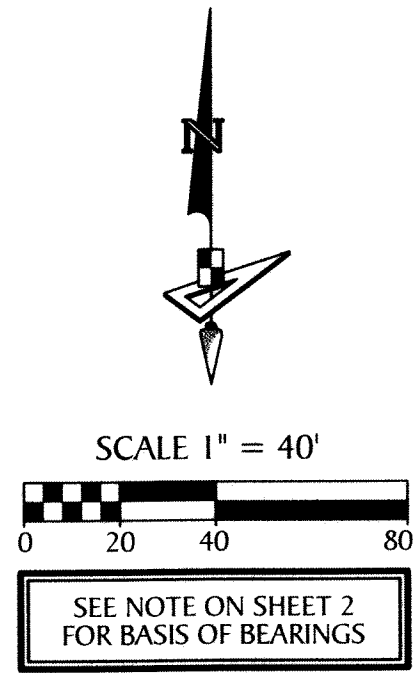
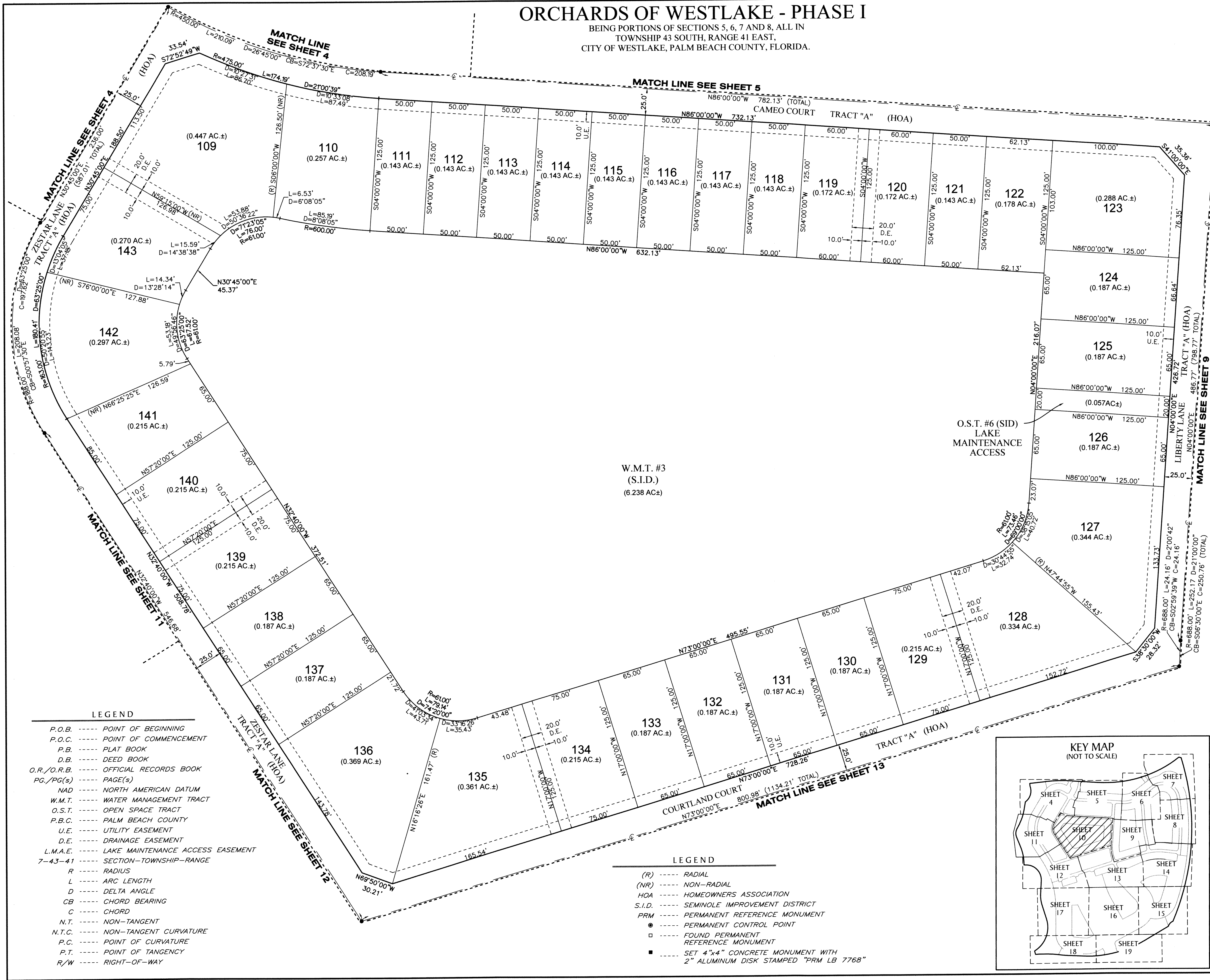


ORCHARDS OF WESTLAKE - PHASE I

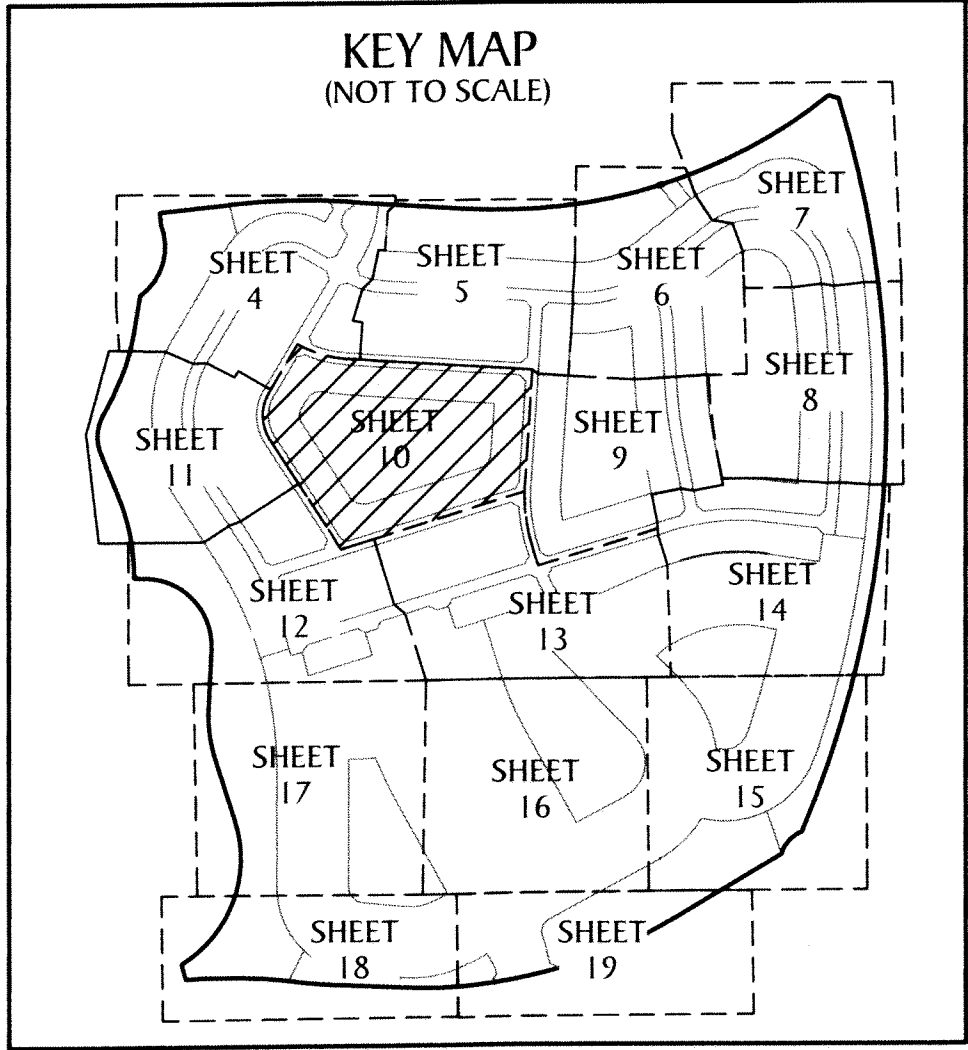
BEING PORTIONS OF SECTIONS 5, 6, 7 AND 8, ALL IN
TOWNSHIP 43 SOUTH, RANGE 41 EAST,
CITY OF WESTLAKE, PALM BEACH COUNTY, FLORIDA.

201



- LEGEND**
- P.O.B. POINT OF BEGINNING
 - P.O.C. POINT OF COMMENCEMENT
 - P.B. PLAT BOOK
 - D.B. DEED BOOK
 - O.R./O.R.B. OFFICIAL RECORDS BOOK
 - PG./PG(S) PAGE(S)
 - NAD NORTH AMERICAN DATUM
 - W.M.T. WATER MANAGEMENT TRACT
 - O.S.T. OPEN SPACE TRACT
 - P.B.C. PALM BEACH COUNTY
 - U.E. UTILITY EASEMENT
 - D.E. DRAINAGE EASEMENT
 - L.M.A.E. LAKE MAINTENANCE ACCESS EASEMENT
 - 7-43-41 SECTION-TOWNSHIP-RANGE
 - R RADIUS
 - L ARC LENGTH
 - D DELTA ANGLE
 - CB CHORD BEARING
 - C CHORD
 - N.T. NON-TANGENT
 - N.T.C. NON-TANGENT CURVATURE
 - P.C. POINT OF CURVATURE
 - P.T. POINT OF TANGENCY
 - R/W RIGHT-OF-WAY

- LEGEND**
- (R) RADIAL
 - (NR) NON-RADIAL
 - HOA HOMEOWNERS ASSOCIATION
 - S.I.D. SEMINOLE IMPROVEMENT DISTRICT
 - PRM PERMANENT REFERENCE MONUMENT
 - PERMANENT CONTROL POINT
 - FOUND PERMANENT REFERENCE MONUMENT
 - SET 4"x4" CONCRETE MONUMENT WITH 2" ALUMINUM DISK STAMPED "PRM LB 7768"



GeoPoint
Surveying, Inc.

4152 W. Blue Heron Blvd.
Suite 105
Riviera Beach, FL 33404

Phone: (561) 444-2720
www.geopointsurvey.com
Licensed Business Number LB 7768

Sheet No. 10 of 19 Sheets